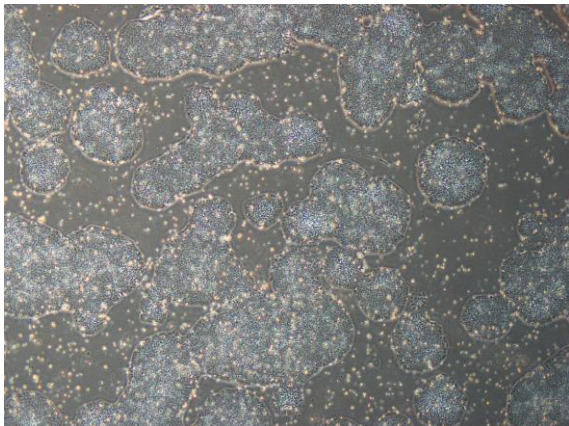
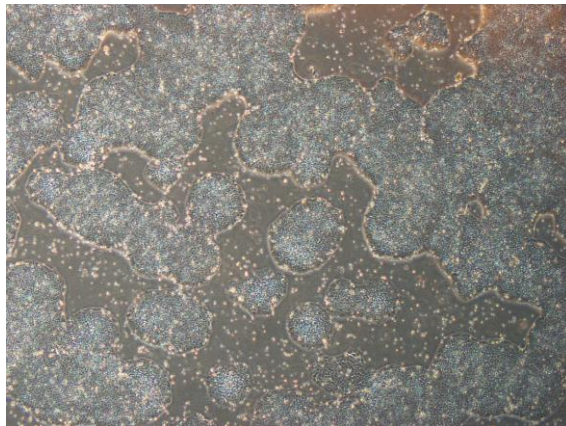


【 CiRA-j-1578 】 Morphology of iPSC colonies

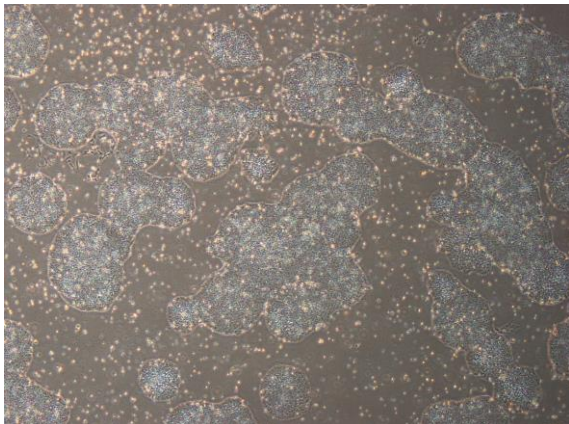
CiRA-j-1578-A: passage-3



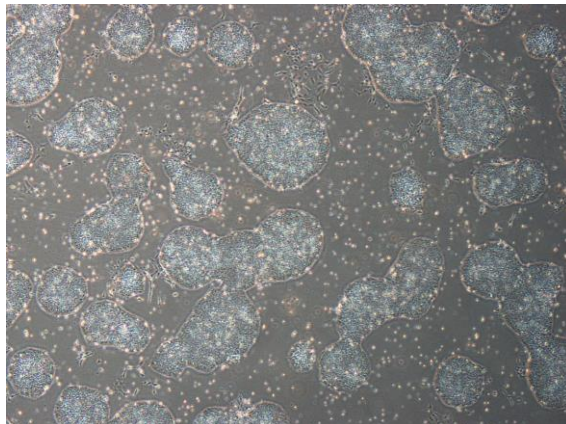
CiRA-j-1578-B: passage-3



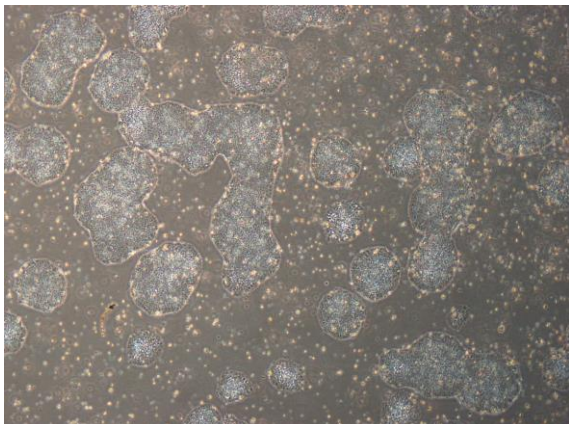
CiRA-j-1578-C: passage-3



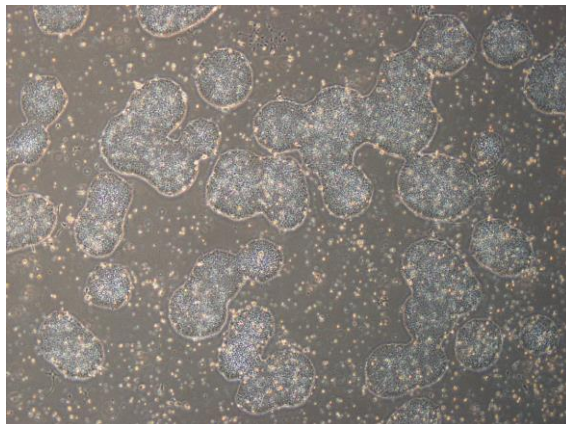
CiRA-j-1578-D: passage-3



CiRA-j-1578-E: passage-3



CiRA-j-1578-F: passage-3



(All images were captured at 4x magnification)